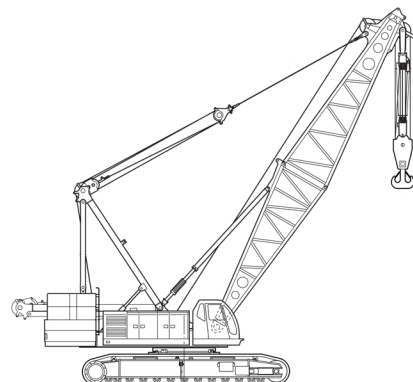


New to Our Fleet

Hitachi Sumitomo SCX2000

200 tonne crawler with optional luffing tower crane attachment



 **samaras** cranes

Certified System
Quality
ISO 9001



Combination of Lifting Capacity & Flexibility in Configurations

Complete solution: straight jib & luffing fly options

Crawler Crane

High capacity and flexible lifting performance

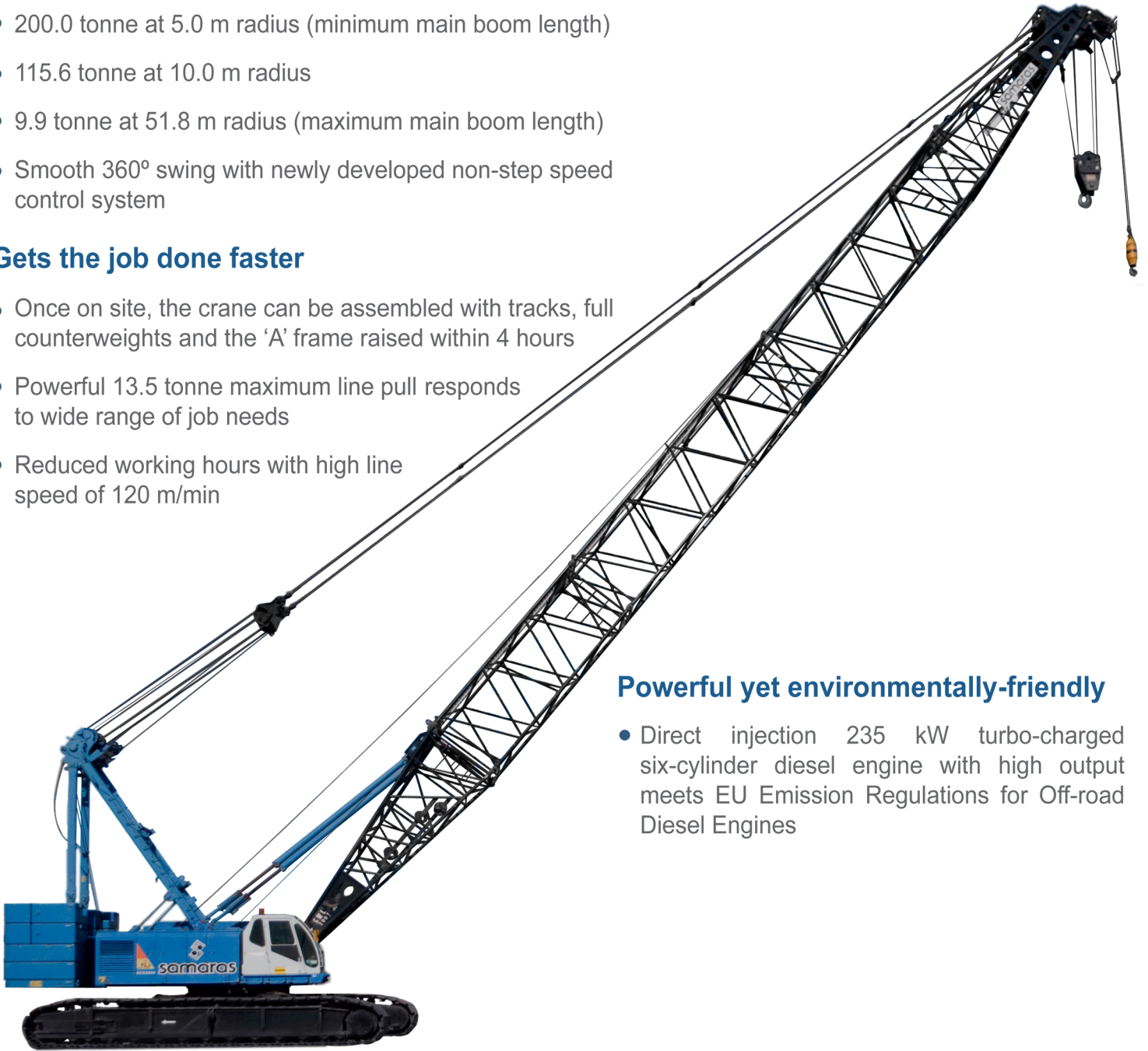
- 200.0 tonne at 5.0 m radius (minimum main boom length)
- 115.6 tonne at 10.0 m radius
- 9.9 tonne at 51.8 m radius (maximum main boom length)
- Smooth 360° swing with newly developed non-step speed control system

Gets the job done faster

- Once on site, the crane can be assembled with tracks, full counterweights and the 'A' frame raised within 4 hours
- Powerful 13.5 tonne maximum line pull responds to wide range of job needs
- Reduced working hours with high line speed of 120 m/min

Powerful yet environmentally-friendly

- Direct injection 235 kW turbo-charged six-cylinder diesel engine with high output meets EU Emission Regulations for Off-road Diesel Engines



Max line pull of

25tonnes

Rated line pull of

13.5tonnes

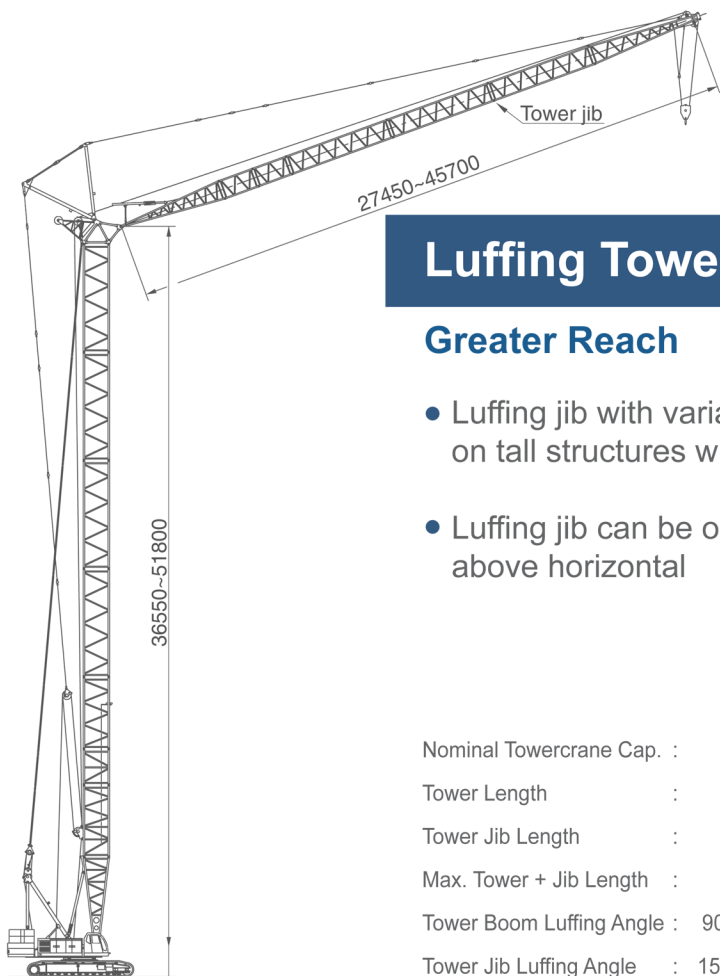
High line speed of

120m/min

Travel Speed of

1.2km/h (max)

200 tonne hydraulic crawler crane with optional luffing towercrane

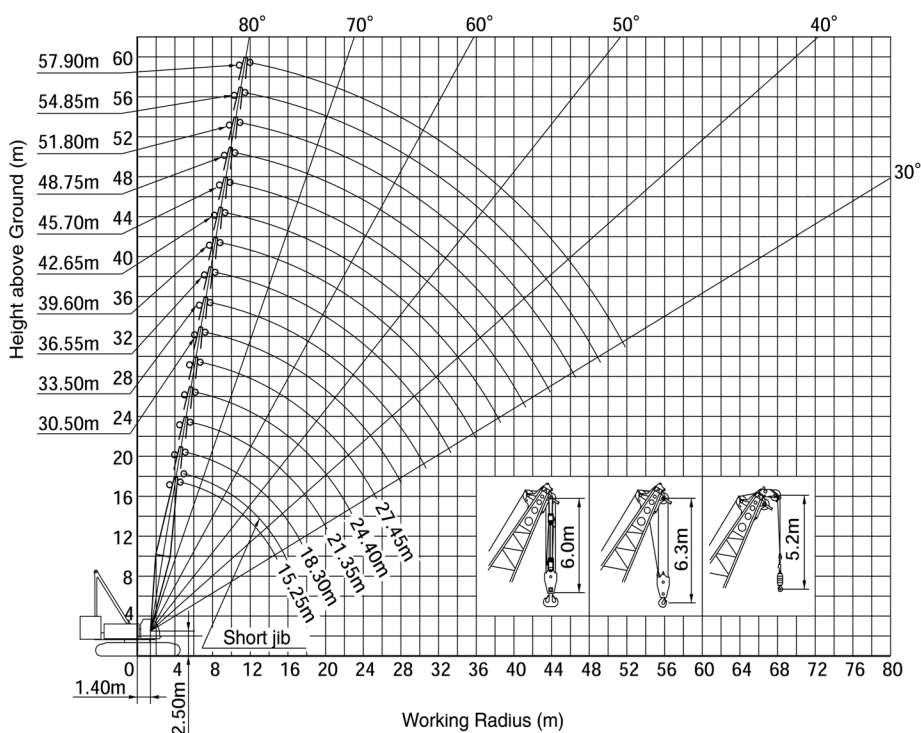
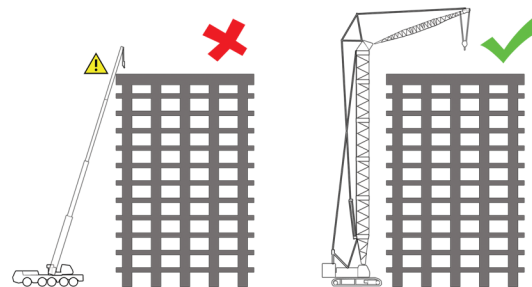


Luffing Towercrane Configuration

Greater Reach

- Luffing jib with variable radius provides extra scope for reaching locations on tall structures where the loads are distant from the structure side walls
- Luffing jib can be operated freely through a positive angle of 60 degrees above horizontal

Nominal Towercrane Cap. :	25.0 t x 14.00 m
Tower Length :	36.55 m ~ 51.80 m
Tower Jib Length :	27.45 m ~ 45.70 m
Max. Tower + Jib Length :	51.80 m + 45.70 m
Tower Boom Luffing Angle :	90° thru 60° steplessly
Tower Jib Luffing Angle :	15° thru 75° (to ground)



Wide Range of Plant Available

As we are constantly acquiring the latest in technology for our crane and transport fleet, please contact our experienced Crane Hire Team for an updated list of alternative plant available to best suit your lifting requirements.

Samaras Structural Engineers

Address: 96-106 Grand Trunkway, Gillman, South Australia 5013, Australia

Telephone: +61 (8) 8447 7088 Facsimile: +61 (8) 8241 2743 Email: cranes@samarasgroup.com Web: www.samarasgroup.com

Mailing Address: P.O. Box 31, Rosewater East, South Australia, Australia
