



**samaras** GROUP

Property Developers ~ General Builders ~ Steel Fabricators  
61-67 Plymouth Road, Wingfield, South Australia 5013  
Phone: (08) 8268 7988 • Facsimile: (08) 8268 2402

# LTM 112

## Mobile Crane ~ Tech



# LIEBHERR



## **LIEBHERR LTM 1170N HYDRAULIC MOBILE CRANE**

### **Technical Data:**

The Liebherr LTM 1170N 170 tonne hydraulic mobile crane is the largest hydraulic mobile crane in South Australia.

With carrier dimensions the same as a 140 tonne Liebherr, the LTM 1170N 170 tonne crane from Samaras has:

- **Superior lifting capacity - 15% to 180% more on main boom**
- **Superior height advantage with main boom**
- **More lattice jib combinations including luffing fly**
- **More reach for a given load with boom or fly**

*The following information is provided in this brochure:*

**Page 4 Carrier Dimensions**

**Page 5 Lifting Heights - Main Boom**

**Page 6...7 Load Chart with 60 tonne counterweight, Main Boom**

**Page 8 Lifting Heights - Folding Jib**

**Page 9 Load Chart, Folding Jib, 60 tonne counterweight**

**Page 10 Lifting Heights - Lattice Fly Jib**

**Page 11 Load Chart, Lattice Fly Jib 0°, 60 tonne counterweight**

**Page 12 Load Chart, Lattice Fly Jib 20°, 60 tonne counterweight**

**Page 13 Lifting Heights - Luffing Lattice Jib**

**Page 14 Load Chart, 56m Luffing Lattice Jib, Boom Length 42.7m and 39 tonne counterweight**

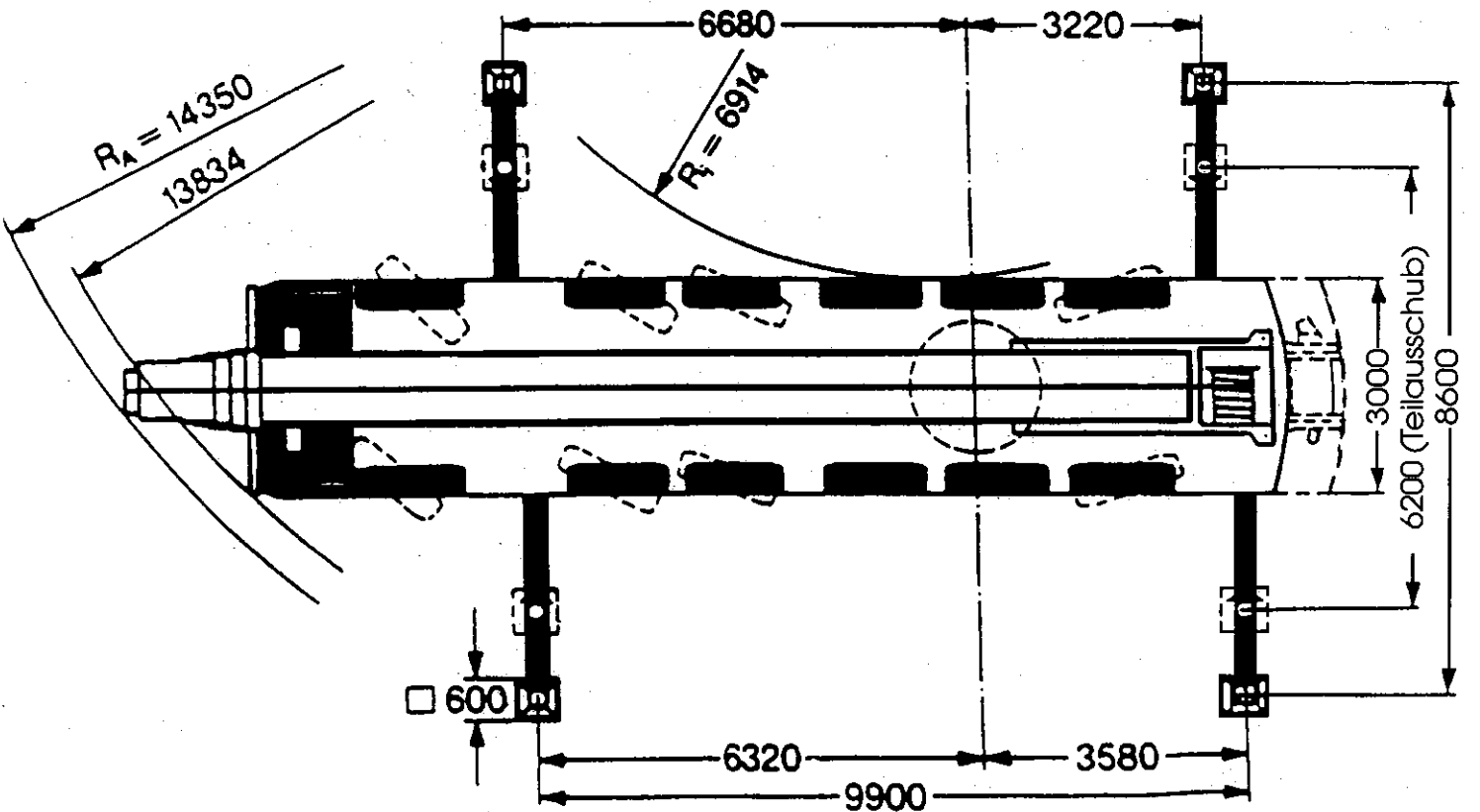
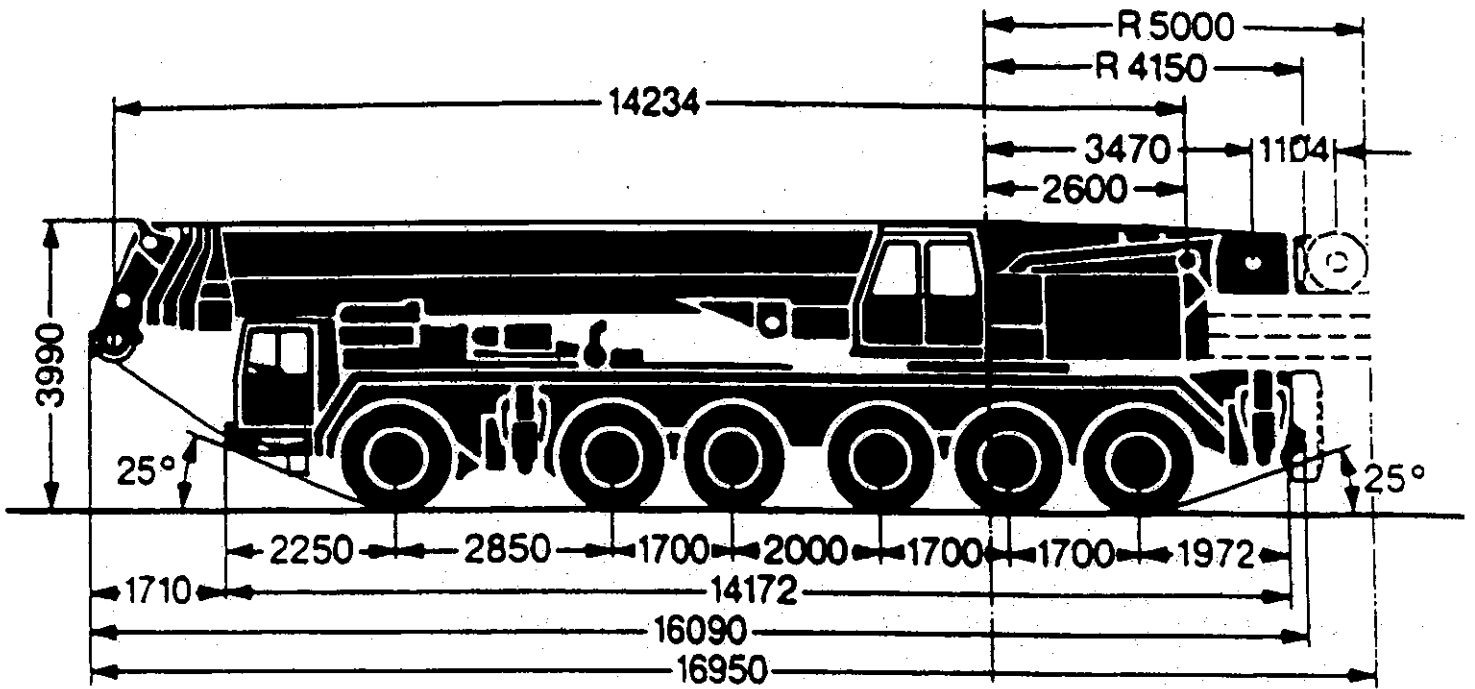
**Page 15...16 Schedule of Samaras Plant and Equipment**

Numerous other configurations are available upon request to cater for your particular lifting requirements.

Contact Nick Protopsaltis for assistance...free of charge.

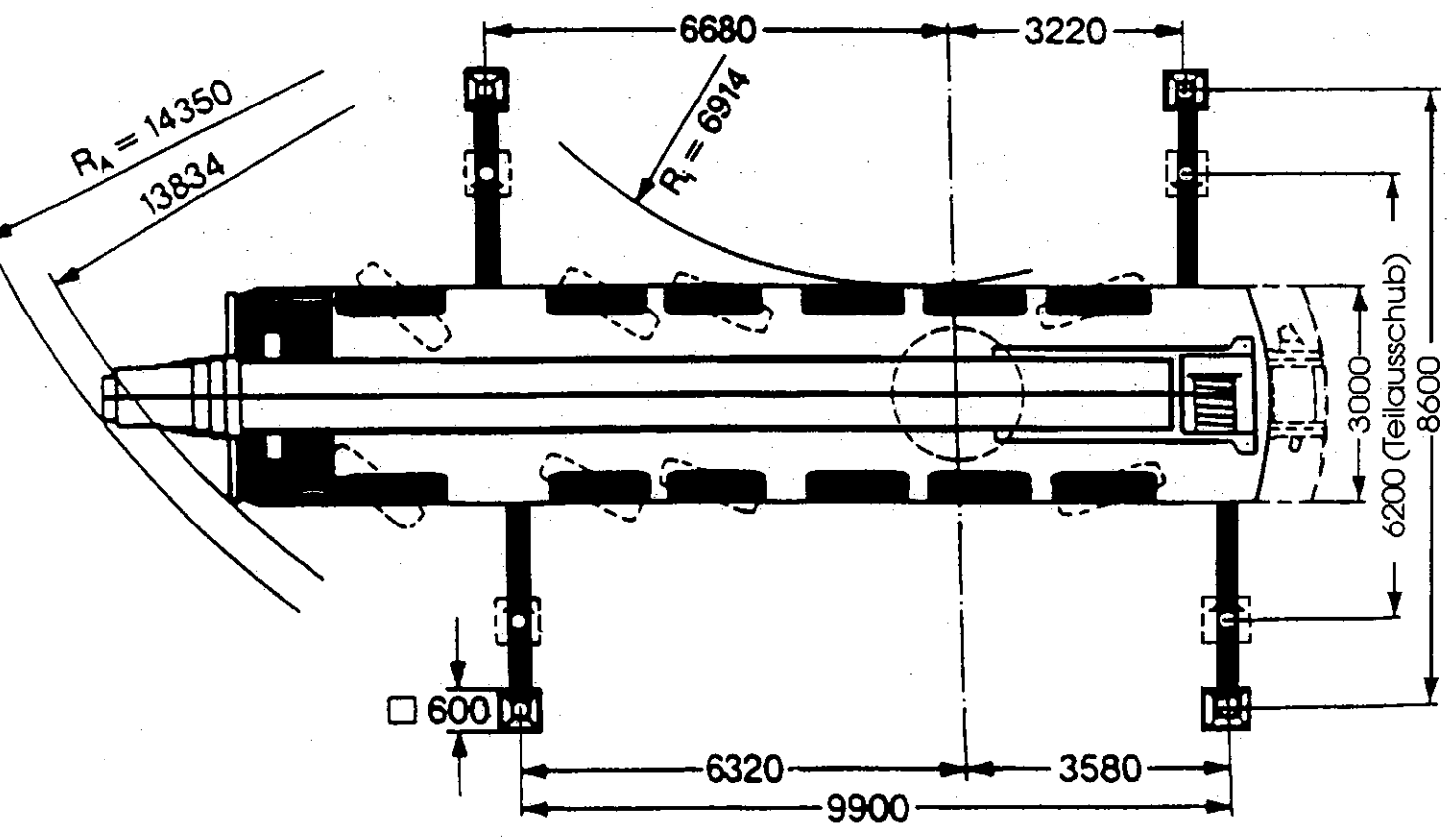
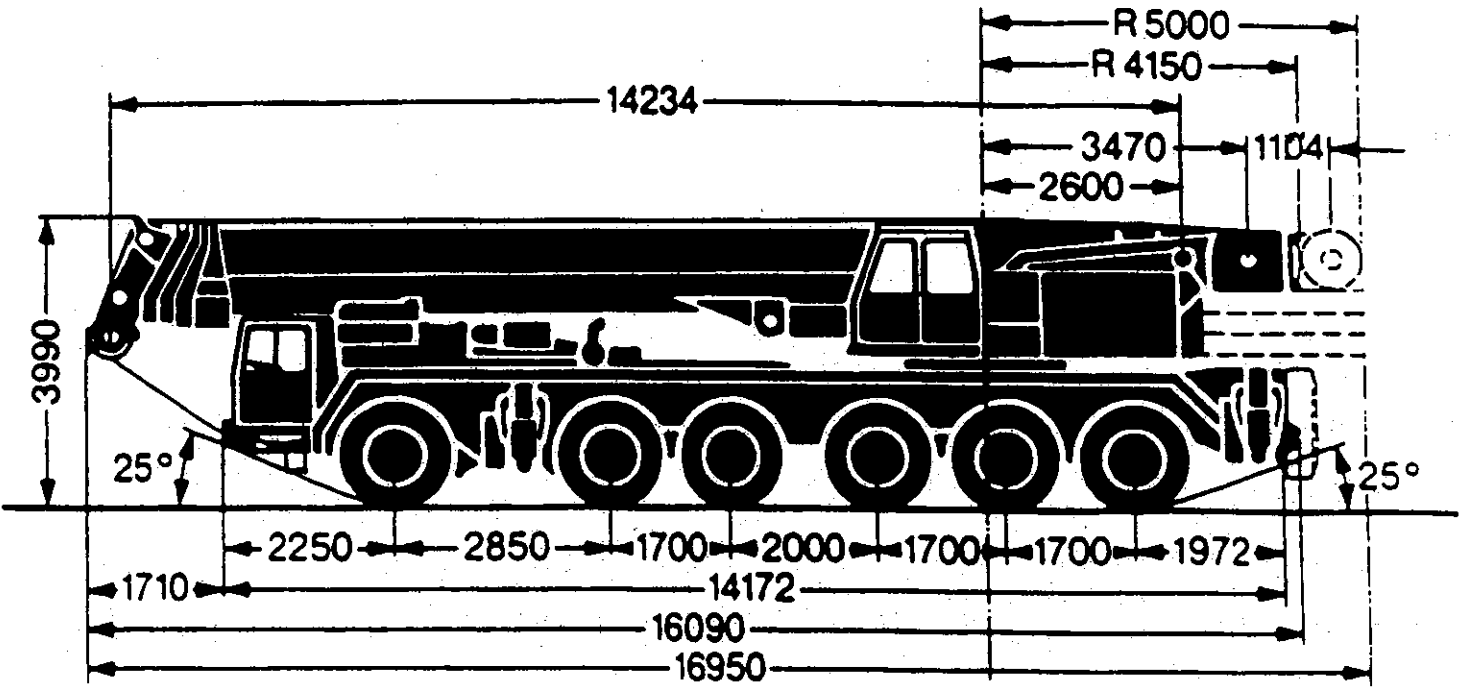
# Dimensions

## Dimensioni

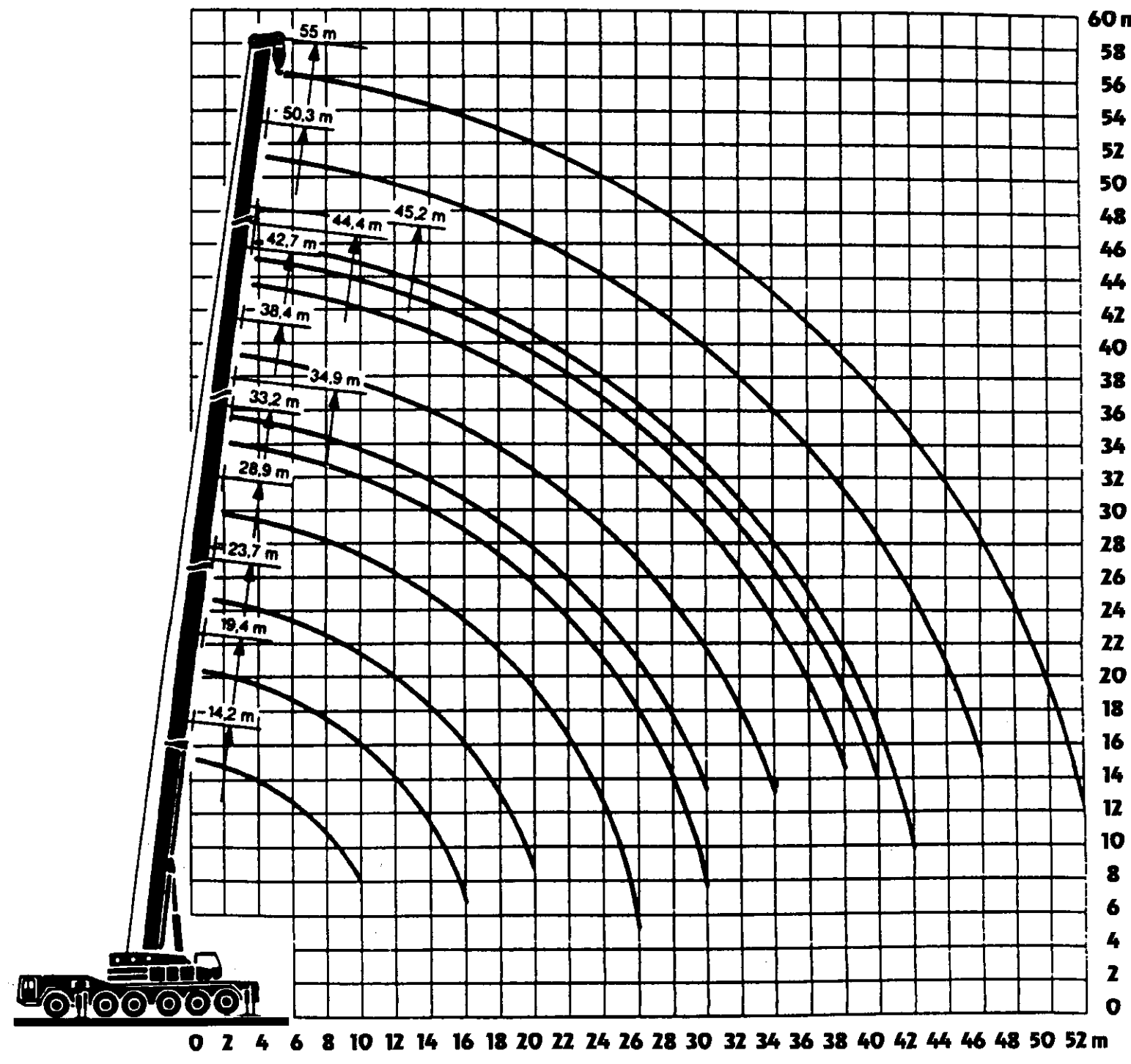


# Dimensions

TELESCOPIC BOOM

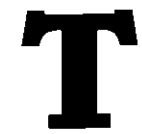


# Lifting heights



75%  
120%

**Load Chart LTM 1170N  
Crane Operation with Telescopic Boom**



Crane supported ~ 360 deg. Slewing and  
Rear Suspension  
Outrigger Extension: 9.9m x 8.6m  
Counterweight: 60 t

TAB 75 309/1  
360 deg. o.r.  
b  
60 t

Radius m	Telescopic Boom Length (m)						
	14.2		19.4		23.7	28.9	33.2
	o.r.*	360°	o.r.	360°			
3	170**	150		136			
3.5	150	139		128			
4	135	129		120	104		
5	113	109		106	97	76	
6	96	93	93	90	88	70	60
7	82	80	79	77	76	64	58
8	71		68		66	59	55
9	64		62		60	54	52
10	58		56		55	49	48
12			46		45	42	42
14			37		36.5	37	36
16			30		30.5	31	31
18					25.7	26.3	26.7
20					22.0	22.5	22.9
22						19.4	19.7
24						16.8	17.1
26						14.7	15.0
28							13.1
30							11.5

Maximum load in case telescoping boom not fixed (unit:tonne)	-		45		45	30	30
Telescoping % ratio of telescopic section	Tele I	0	50	92	92	92	92
	Tele II	0	0	0	50	92	
	Tele III	0	0	0	0	0	
	Tele IV	0	0	0	0	0	
<b>LMB CODE</b>	<b>004</b>	<b>014</b>	<b>004</b>	<b>014</b>	<b>014</b>		
Maximum Capable Wind Speed (m/s)	14				13		
Maximum Capable Slewing Speed Range	2						

o.r.\* = Working Range: Rear Suspension  
\*\* = Lifting capacity more than 141 tonne if additional equipment is installed

75%  
120%

**Load chart LTM 1170N  
Crane Operation with Telescopic Boom**



Crane supported ~ 360 deg. Slewing  
Outrigger Extension: 9.9m x 8.6m  
Counterweight: 60 t

TAB 75 309/2  
360 deg.  
b  
60 t

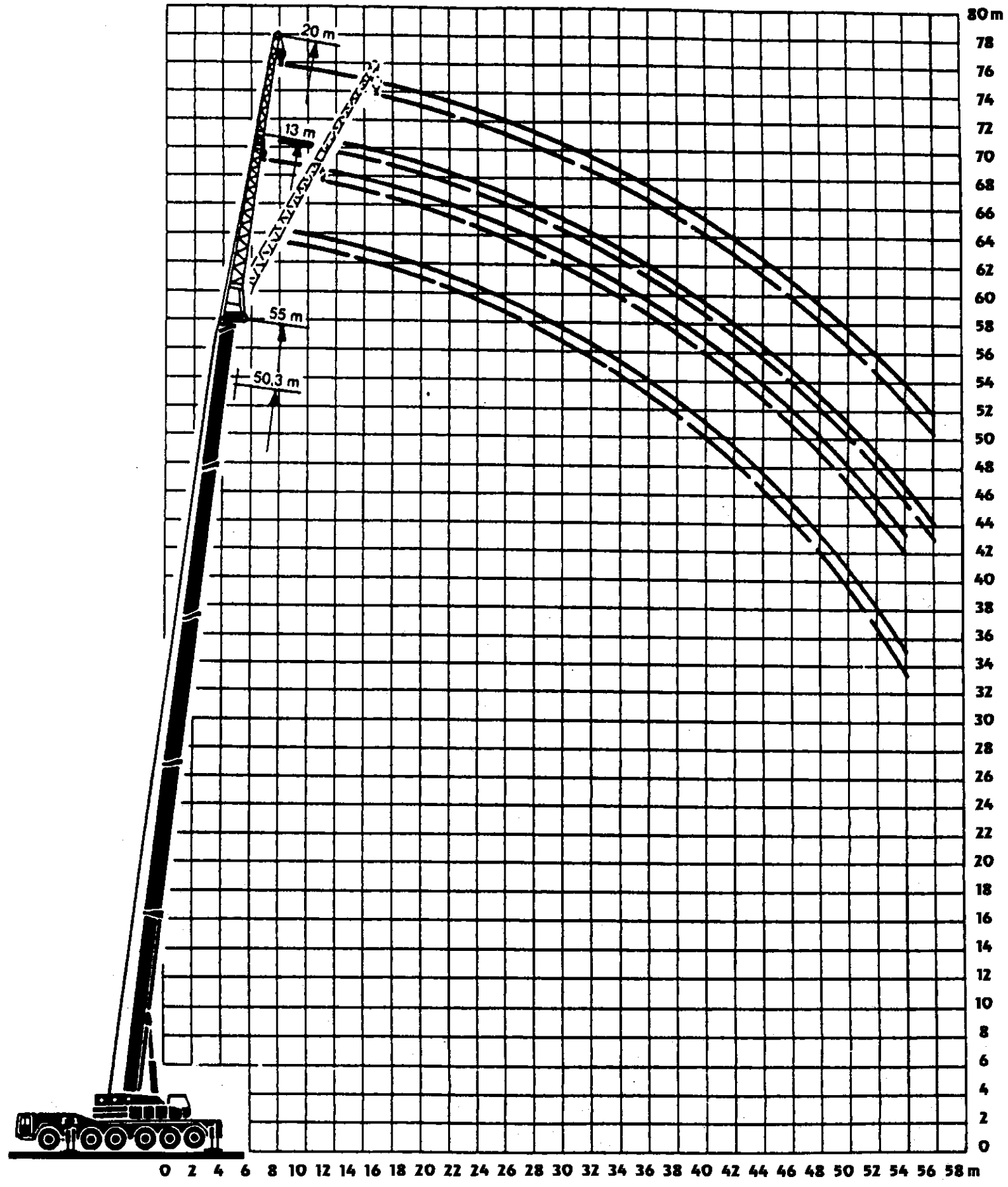
Radius m	Telescopic Boom Length (m)						
	34.9	38.4	42.7	44.4	45.2	50.3	55.5
6	32						
7	30	47					
8	27.5	45	37.5	28.0	28.0		
9	25.0	43	36.5	26.8	26.8		
10	23.5	41	35.5	25.3	25.3	25.0	
12	20.5	36	33.5	22.6	30	23.0	17.0
14	18.2	32.5	30.5	20.4	28.5	21.0	15.6
16	16.5	28.8	27.6	18.6	26.0	19.3	14.5
18	15.0	25.4	24.5	16.8	23.5	17.6	13.5
20	13.6	22.7	22.0	15.7	21.0	16.2	12.5
22	12.5	20.5	19.4	14.5	19.0	14.9	11.6
24	11.7	17.9	17.6	13.5	17.2	13.9	10.7
26	11.0	15.7	16	12.5	16.0	13.0	10.0
28	10.2	13.8	14.3	11.7	13.9	12.3	9.4
30	9.5	12.1	12.5	11.0	12.5	11.6	8.8
32		10.7	11.0	10.5	10.9	11.0	8.4
34		9.4	9.7	9.9	9.6	10.1	7.9
36			8.6	9.5	8.5	9.3	7.6
38			7.6	9.1	7.5	8.3	7.2
40				8.3	6.7	7.4	6.7
42					5.9	6.6	6.3
44						5.9	6.0
46						5.3	5.5
48							4.9
50							4.4
52							4.0

Maximum load in case telescoping boom not fixed (unit:tonne)	10.0		25.0	25.0	10.0	25.0	10.0	10.0
Telescoping % ratio of telescopic section	Tele I	0	92	92	50	100	100	100
	Tele II	50	92	92	92	100	100	100
	Tele III	100	50	92	100	100	100	100
	Tele IV	50	0	0	50	0	50	100
<b>LMB CODE</b>	<b>014</b>							
Maximum Capable Wind Speed (m/s)	13	11						
Maximum Capable Slewing Speed Range	2	1						

75%  
120%

**Load Chart LTM 1170N**  
**Crane Operation with Folding Jib**

Crane supported ~ 360 deg. slewing  
Outrigger Extension: 9.9m x 8.6m  
Counterweight: 60 t



Radius m	Telescopic Boom Length (m) / Folding Jib Length (m)				
	38.4/13	42.7/13	42.7/20	45.2/13	45.2/20
8	20.0				
9	20.0				
10	20.0	18.0		16.5	
12	20.0	17.7	10.7	16.3	10.2
14	20.0	17.3	10.0	15.2	9.6
16	20.0	17.0	9.3	13.7	9.0
18	19.0	16.6	8.7	12.4	8.4
20	17.8	15.6	8.1	11.4	7.9
22	16.5	14.6	7.6	10.6	7.4
24	15.3	13.6	7.1	9.9	6.9
26	14.4	12.7	6.6	9.3	6.5
28	13.4	11.9	6.2	8.7	6.1
30	12.5	11.1	5.8	8.2	5.7
32	11.3	10.4	5.5	7.7	5.4
34	10.1	9.8	5.2	7.3	5.1
36	9.0	9.1	5.0	6.9	4.9
38	8.1	8.2	4.8	6.5	4.6
40	7.3	7.4	4.6	6.2	4.5
42	6.5	6.6	4.3	5.8	4.2
44	5.9	5.9	4.1	5.5	3.9
46		5.3	4.0	5.0	3.7
48		4.7	3.9	4.5	3.5
50		4.3	3.8	4.0	3.3
52			3.7		3.1
54			3.6		2.9
56			3.4		2.7
58					2.5

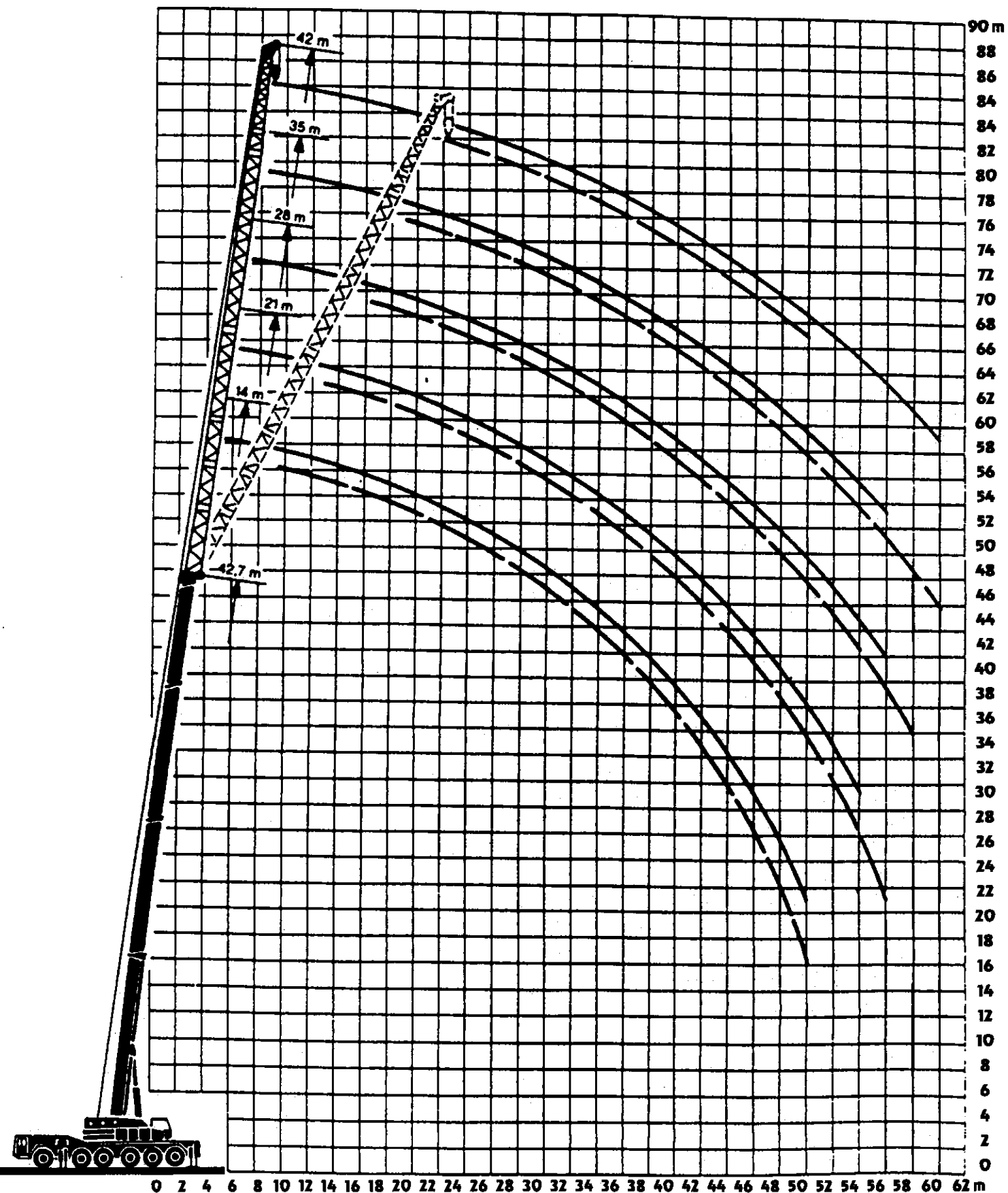
Telescoping % ratio of telescopic section	Tele I	92	92	100
	Tele II	92	92	100
	Tele III	50	92	100
	Tele IV	0	0	0
<b>LMB CODE</b>		<b>074</b>	<b>084</b>	<b>074</b> <b>084</b>
Maximum Capable Wind Speed (m/s)		11		
Maximum Capable Slewing Speed Range		1		

Operate Telescopic Boom Together

75%  
120%

Load Chart LTM 1170N  
Crane Operation with Fixed Fly Jib 0 deg.

Crane supported ~ 360 deg. slewing  
Outrigger Extension: 9.9m x 8.6m  
Counterweight: 60 t



Radius m	Telescopic Boom Length (m) / Folding Jib Length (m)				
	38.4/14	42.7/14	42.7/21	42.7/28	42.7/35
8	23.0				
9	22.2				
10	21.4	18.5			
12	20.0	18.2	12.3		
14	18.7	17.6	12.0	9.0	
16	17.5	16.8	11.6	8.4	6.0
18	16.5	15.8	11.0	7.8	5.6
20	15.5	14.8	10.3	7.3	5.2
22	14.2	13.8	9.6	6.8	4.9
24	13.5	12.9	9.0	6.4	4.6
26	12.8	12.0	8.4	6.0	4.3
28	12.1	11.2	7.8	5.6	4.1
30	11.5	10.4	7.4	5.3	3.8
32	11.0	9.7	7.0	5.0	3.6
34	10.3	9.1	6.5	4.8	3.4
36	9.4	8.5	6.2	4.6	3.3
38	8.4	8.2	5.9	4.4	3.1
40	7.6	7.8	5.6	4.2	3.0
42	6.8	7.0	5.4	4.1	2.8
44	6.2	6.3	5.1	3.9	2.7
46	5.6	5.6	4.9	3.8	2.6
48		5.1	4.8	3.7	2.5
50		4.6	4.6	3.5	2.4
52			4.3	3.4	2.3
54			3.9	3.3	2.3
56			3.5	3.2	2.2
58				3.1	2.1

Telescoping % ratio of telescopic section	Tele I	92		92		
	Tele II	92		92		
	Tele III	50		92		
	Tele IV	0		0		
<b>LMB CODE</b>		<b>104</b>	<b>104</b>	<b>114</b>	<b>124</b>	<b>134</b>
Maximum Capable Wind Speed (m/s)		11				
Maximum Capable Slewing Speed Range		1				

Operate Telescopic Boom Together

75%  
120%

**Load Chart LTM 1170N**  
Crane Operation with Fixed Fly Jib 20 deg.

Crane supported ~ 360 deg. slewing  
Outrigger Extension: 9.9m x 8.6m  
Counterweight: 60 t

**TF**

TAB 75 286  
F: 20 deg.  
b  
60 t

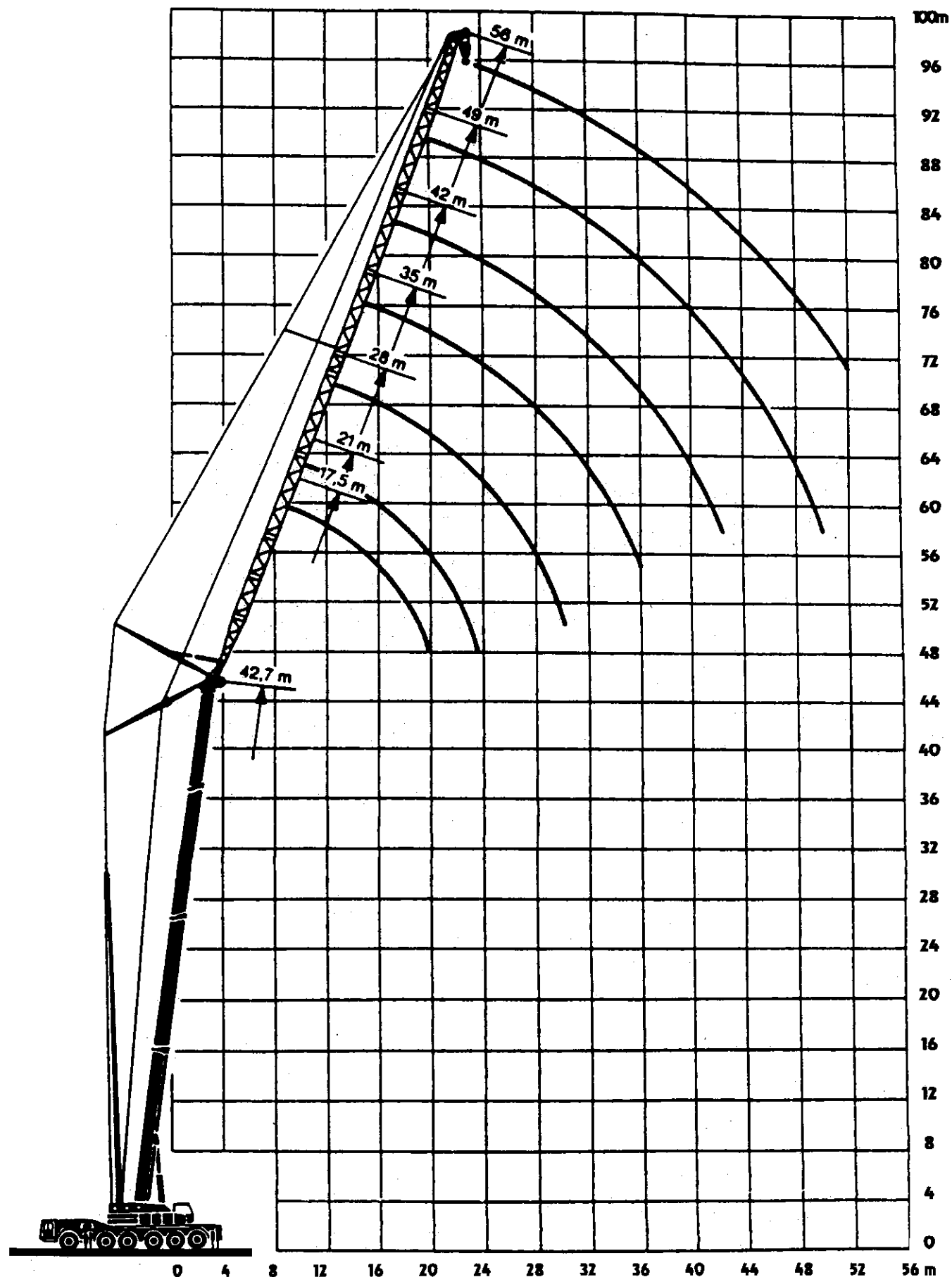
Radius m	Telescopic Boom Length (m) / Folding Jib Length (m)				
	38.4/14	42.7/14	42.7/21	42.7/28	42.7/35
12	13.5				
14	12.8	11.0			
16	12.0	10.4			
18	11.4	9.9	7.3		
20	10.7	9.3	6.9	4.7	
22	10.0	8.9	6.6	4.5	
24	9.5	8.4	6.3	4.4	3.2
26	9.0	8.0	6.0	4.2	3.0
28	8.6	7.7	5.8	4.1	2.9
30	8.2	7.3	5.5	4.0	2.8
32	7.8	7.0	5.3	3.8	2.7
34	7.5	6.7	5.1	3.7	2.6
36	7.1	6.3	4.9	3.6	2.5
38	6.8	6.0	4.7	3.5	2.4
40	6.5	5.8	4.5	3.4	2.4
42	6.1	5.5	4.4	3.3	2.3
44	5.8	5.2	4.2	3.2	2.2
46	5.5	5.0	4.0	3.1	2.1
48		4.7	3.8	3.0	2.1
50		4.5	3.6	3.0	2.0
52			3.5	2.9	1.9
54			3.4	2.8	1.9
56			3.2	2.7	1.8
58			3.1	2.6	1.7
60			2.5	2.5	1.6

Telescoping % ratio of telescopic section	Tele I	92			92	
	Tele II	92			92	
	Tele III	50			92	
	Tele IV	0			0	
<b>LMB CODE</b>		<b>109</b>	<b>109</b>	<b>119</b>	<b>129</b>	<b>139</b>
Maximum Capable Wind Speed (m/s)				11		
Maximum Capable Slewing Speed Range				1		

Operate Telescopic Section Together

**Lifting heights**  
Lifting heights

LUFFING





**75%**  
**12%**

**Load Chart LTM 1170N  
Crane Operation with Derrick Fly Jib**

**TN**

Crane supported ~ 360 deg. slewing  
 Outrigger Extension: 9.9m x 8.6m  
 Telescopic Boom Angle at Level Position 68 deg.  
 Counterweight: 39 t

**TAB 75 373  
 T: 68 deg.  
 b  
 39 t**

Radius m	N Jib Length 56m			
	Telescopic Boom Length			
	23.7 m	33.2 m	38.4 m	42.7 m
42	1.9			
44	1.8	1.5		
46	1.7	1.5	1.2	
48	1.6	1.4	1.1	1.0
50	1.5	1.4	1.1	1.0
52	1.5	1.3	1.1	1.0
54	1.4	1.2	1.0	1.0
56	1.4	1.2	1.0	1.0
58	1.3	1.1	1.0	1.0
60		1.0	1.0	1.0
62		0.9	0.8	0.8

Telescopic % Ratio of Telescopic Section	Tele I	92	92	92	92
	Tele II	0	92	92	92
	Tele III	0	0	50	92
	Tele IV	0	0	0	0
<b>LMB CODE</b>	<b>196</b>				
Maximum Capable Wind Speed (m/s)	9				
Maximum Capable Slewing Speed Range	1				

**Telescopic Sections must Operate Together**